

THE ROCK® II

INSULATED FOOD TRAY FROM CORTECH® AUSTRALASIA

The **ROCK II** is made from insulated material that does not absorb water. One Piece, no seams, no internal insulation. Ideal for continuous use in extreme environments!

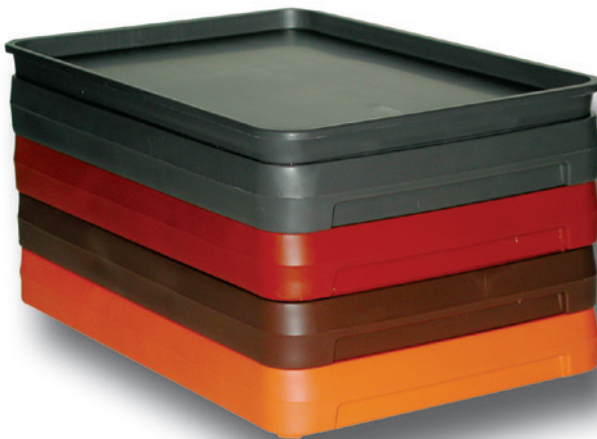


NEW DEEPER FOOD COMPARTMENTS.



**HOT STAYS HOT.
Cold Stays Cold.**

Overall Dimension (14-1/4" x 9-1/2" x 2.25")



THE ROCK® II - Cortech's TRUE One-Piece, seamless design insulated food tray, has been tested in correctional facilities with over 350 different menus. The five 2.25" deep compartments have proven that they can handle any correctional meal, plus with the 2 additional condiment compartments, use of bulk condiment portions will yield a savings that can pay for the tray itself.

THE ROCK II is:

- Made from an insulated material, THE ROCK® has no internal insulation, which means it will not absorb water
- The radius corners and softly beveled bottom make it easier to eat from and easier to clean
- **THE ROCK® II** is manufactured with an FDA Approved Material and built to ISO Quality Standards
- **THE ROCK® II** carries a 10 Year Warranty Against Breakage, Cracking or Leaking
- Manufactured to ISO Quality Standards in the USA

Item #	Description	Case Qty.
2500C	Brown Rock	10
2500DG	Dark Gray Rock	10
2500TC	Terra Cotta Rock (Burnt Orange)	10
2500O	Orange Rock	10
2500CL	Brown Lid	10
2500DGL	Dark Gray Lid	10
2500TCL	Terra Cotta Lid	10
2500OL	Orange Lid	10

Dimensions and weights are nominal.
Specifications subject to change without notice.



**10 YEAR
WARRANTY**

**BUDGET PRICES
EXTREME
PERFORMANCE**



100% AMERICAN MADE

Ideal For Use In: Correctional Facilities, Behavioral/Mental Health Facilities & Hospitals.