

**THE ENDURANCE SERIES FURNITURE  
LINE FROM CORTECH USA IS IDEAL  
FOR CONTINUOUS, INTENSIVE USE IN  
EXTREME ENVIRONMENTS.**

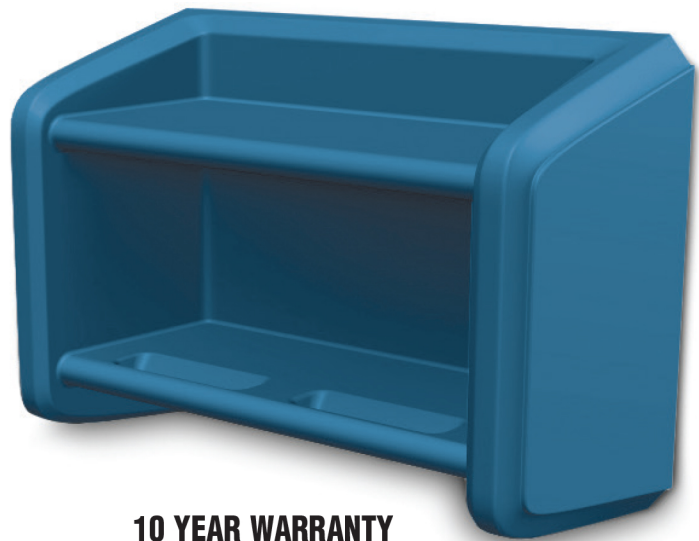


# Endurance

Wall Shelf **Extreme-Use Furniture**

**THE ENDURANCE WALL SHELF FEATURES:**

- A 10 Year Warranty.
- Molded In Shelving for open storage of books and other personal items.
- Durable, one piece, rotationally molded design for increased strength. Constructed of high impact “no break” polyethylene. No steel or wood components.
- Bolt to the wall via concealed pilot holes with hardware of your choice.
- Manufactured to ISO Quality Standards in the USA.
- Stain resistant.
- Easy to clean and maintain.
- Flame Retardant (passes Cal 133). Test reports available upon request.



**10 YEAR WARRANTY**



Available in

 Black
  Blue Gray
  Brown
  Green
  Slate Blue

Custom colors available upon request.  
Call Cortech for details.

Item #	Color
7604BK	Black FR
7604SB	Slate Blue FR
7604GN	Green FR
7604BN	Brown FR
7604G	Blue Gray FR

All dimensions and weights are nominal. Specifications subject to change without notice.  
FR = Flame Retardant.

**Ideal For Use In: Correctional Facilities, Behavioral/Mental Health Facilities & Hospitals.**