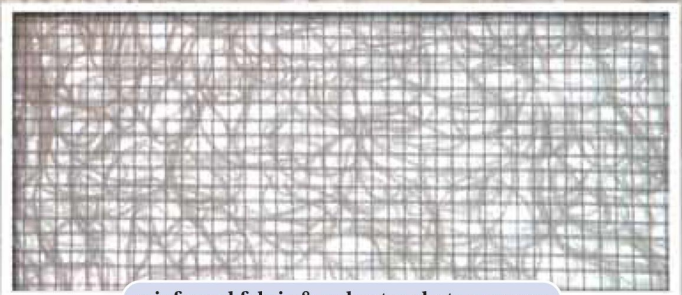


see-clear-ity

Finally, a “Clear Mattress” that makes sense.

Unlike other “Clear Mattresses” the combination of our **reinforced glass clear correctional fabric** and our exclusive **polyester elastomer core** creates a sense of openness that actually allows you to see into the mattress core, making it easier to detect contraband.

Like all of our mattress products, the **see-clear-ity** mattress has 100% sealed seams and our patented vent, creating a fluid-resistant mattress that is strong and tear resistant.



reinforced fabric & polyester elastomer core



contraband is visible in mattress core



The Derby “Blue”
The original sealed seam mattress

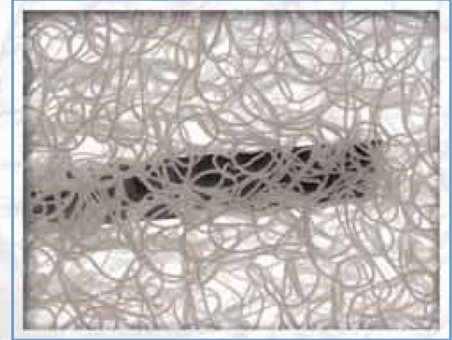
CORTECH
AUSTRALASIA

Derby see-clear-ity Clear Mattress Features and Benefits



SECURITY

- Contraband can be seen inside the mattress core
- Mattress can be easily searched to reduce security risks
- Strong, tear-resistant cover
- 100% sealed seams
- Zero thread seams to break or to hide contraband



DURABILITY

- Hexagonal Roller Tested to ensure maximum mattress core life
- Easily cleaned and disinfected
- Core protected from contamination such as bodily fluids, head lice, bed bugs

VENT

- Breathable - in and out
- Fluid resistant - blood, water, urine, etc.
- Sealed into the mattress



FLAMMABILITY

- Fire resistant - Meets and exceeds:
- Federal Mandates 16 CFR part 1632 and 16 CFR part 1633

OTHER FEATURES

- Abrasion resistant
- Envelope style construction



CORTECH
AUSTRALASIA



Proudly Made in the USA

CORTECH AUSTRALASIA PTY LTD
E: info@cortechaustralasia.com.au

PH: 03 8791 3700
W: cortechaustralasia.com.au